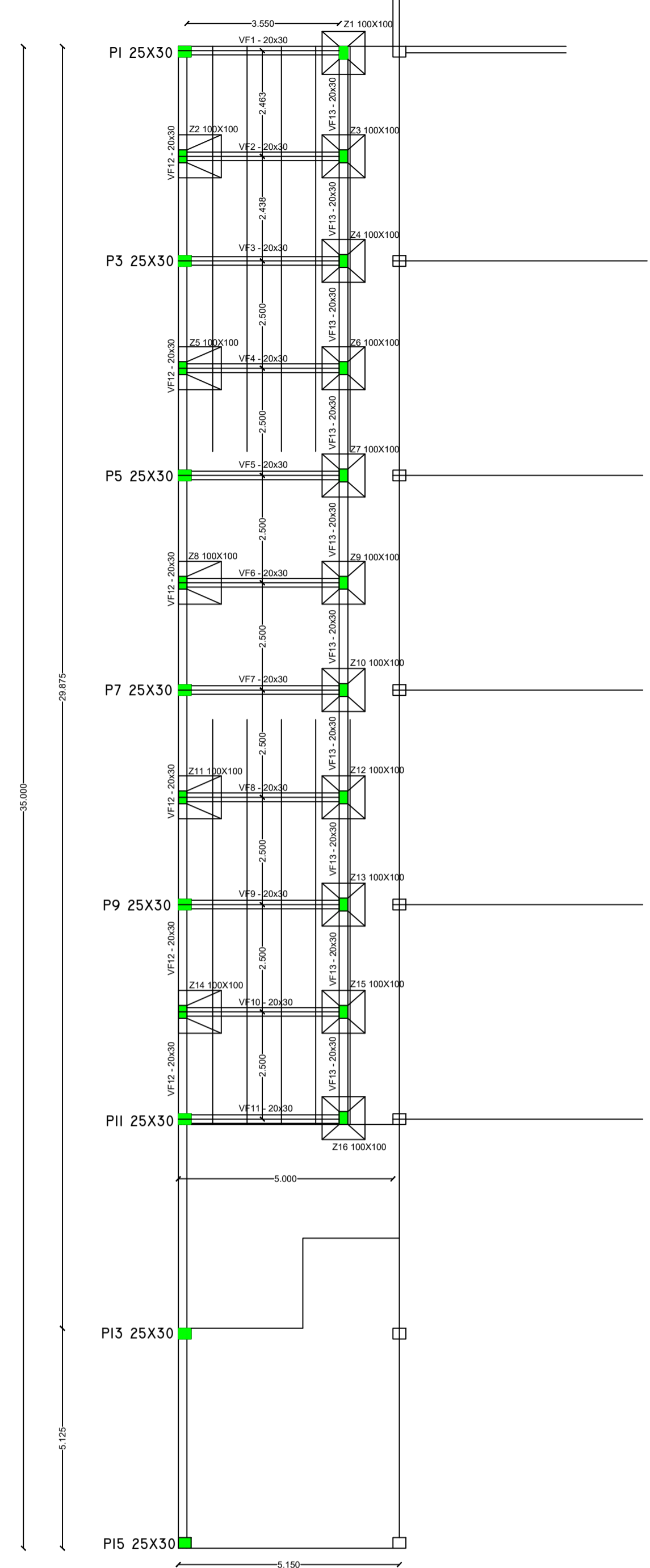
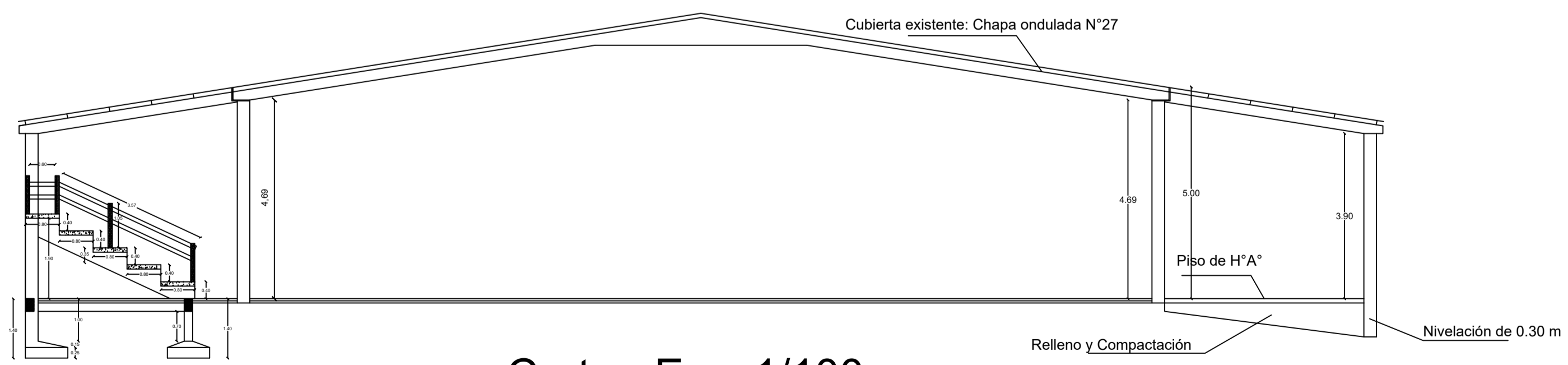
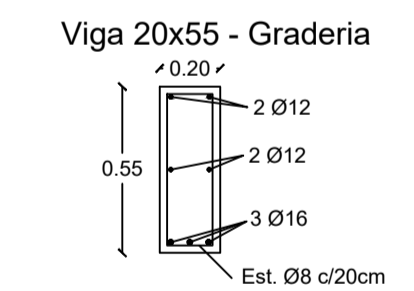
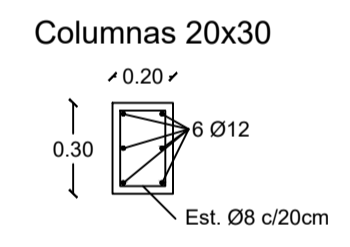
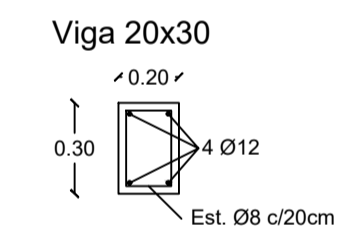
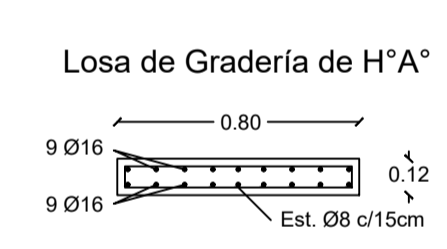
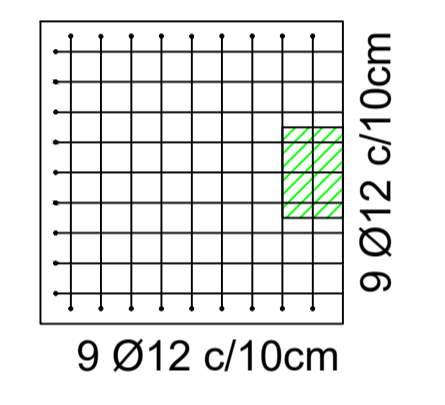
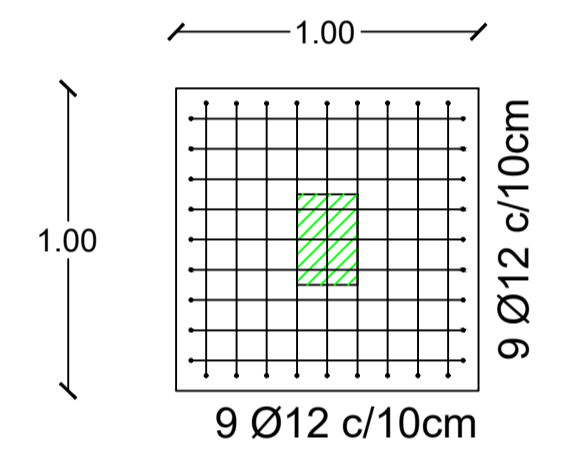
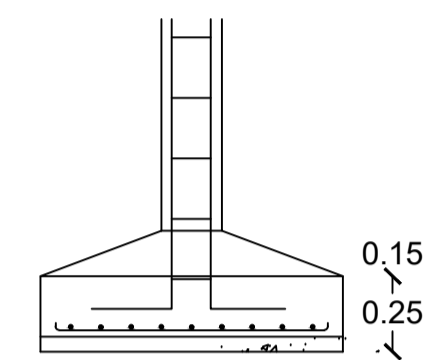
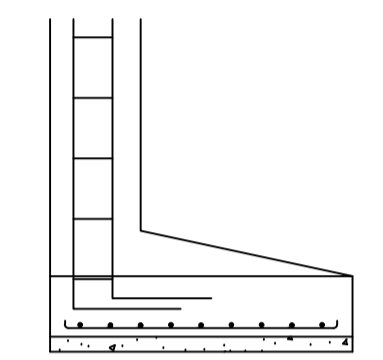
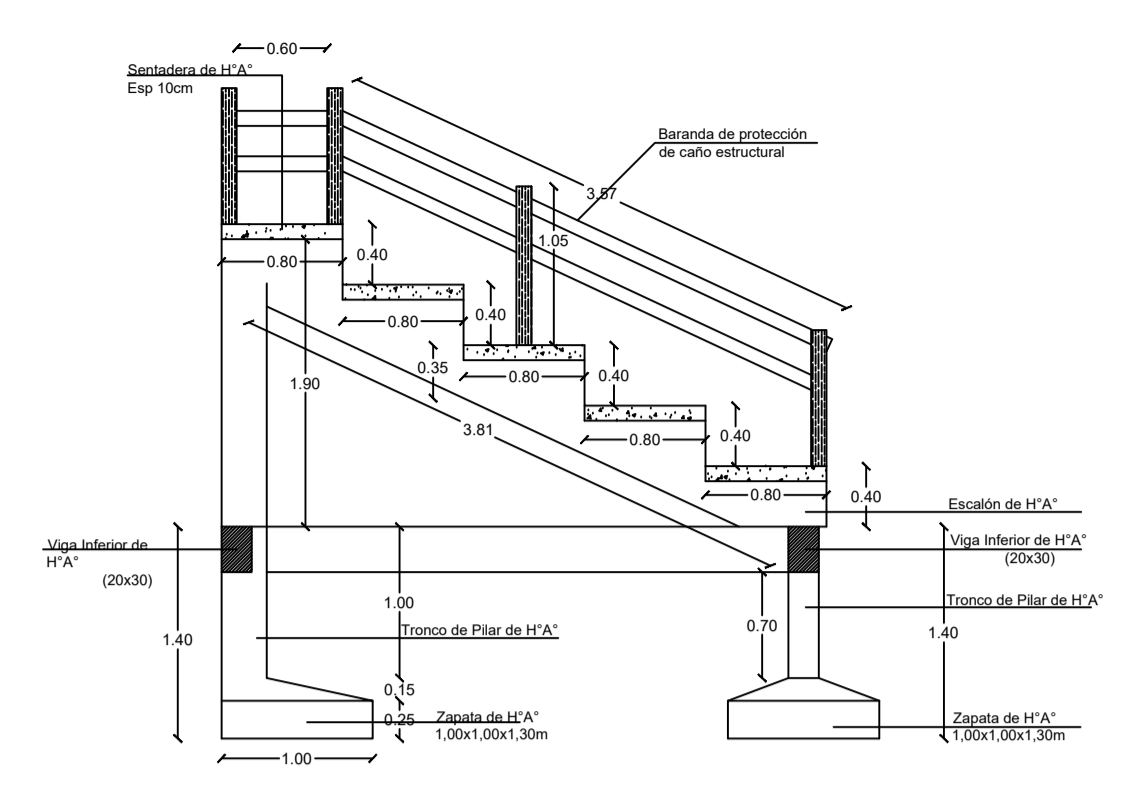


Planta Constructiva
Esc. 1/100



Planta Cimentación
Esc. 1/100

Sección Graderías



Corte - Esc. 1/100

OBRA: CONSTRUCCIÓN DE GRADERÍAS Y PISO DE H°A° EN POLIDEPORTIVO DE ITAPÚA POTY - PIRAPO'1 1° LINEA
UBICACIÓN: Pirapo'i 1° Linea
DISTRITO: ITAPÚA POTY
PROYECTO: SECRETARIA DE OBRAS PÚBLICAS
 Ing. Fernando Oreggioni
 Secretario de Obras P. Gob. de Itapúa
 Matrícula MOPC 923