

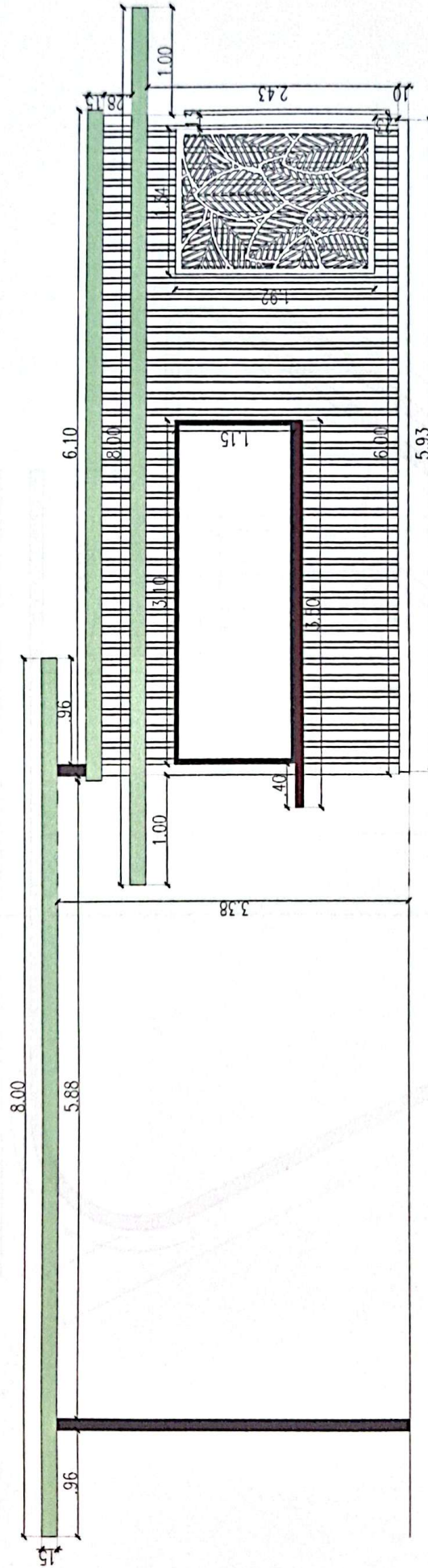


Architectural floor plan of a bathroom. The plan is divided into three main sections: a central rectangular area labeled "comercial", and two smaller rectangular areas at the bottom labeled "Baño mujeres" (left) and "Baño Hombres" (right). The overall dimensions are 2.50m wide (labeled "B" at the bottom) and 3.40m deep (labeled "A" on the left). The "Baño mujeres" section is 1.50m wide and 1.40m deep, containing a toilet and a sink. The "Baño Hombres" section is 1.50m wide and 1.40m deep, also containing a toilet and a sink. The central "comercial" area is 2.30m wide and 1.10m deep. There is a 2.40m wide corridor or entrance area between the two smaller sections. A 60-degree angle is indicated in the corridor area. The plan also shows a 2.30m wide section at the top, a 3.0m wide section at the top, and a 3.40m wide section at the top. The overall width is 2.50m, and the overall depth is 3.40m.

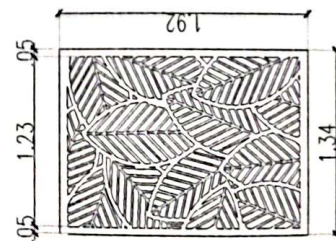
Technical drawing of a building facade elevation. The drawing shows a central section with two large rectangular openings, labeled "PUERTA METÁLICA" (Metal Door) and "PUERTA METÁLICA" (Metal Door). The overall width of the facade is 4.50. The height of the facade is 2.50. The central section has a width of 2.60. The two large openings are separated by a vertical element with a width of 1.00. The openings are labeled "PUERTA METÁLICA" and "PUERTA METÁLICA". The drawing includes various dimensions and labels for the facade components.

		PROYECTO PARQUE LIMÍTROFE CAPITÁN BADO
		CAPITÁN BADO - PARAGUAY
		CASILLAS COMERCIALES
Firma del técnico Arq. Johana Martínez		NÚMERO DE LÁMINA  01

# CASILLAS COMERCIALES



VISTA A-A ACOTADA  
Escala 1/50



DETALLE DE CHAPA  
DECORATIVA  
Escala 1/50

PROYECTO PARQUE LÍMITROFE CAPITÁN BADO	
CAPITÁN BADO - PARAGUAY	
CASILLAS COMERCIALES	
Firma del técnico Arq. Johana Martínez	NÚMERO DE LÁMINA 02



PROYECTO PARQUE LIMITROFE CAPITAN BADO	
CAPITAN BADO - PARAGUAY	
MIRADOR	
	Paises del Sistema Arg. Johnson (Mirador)
CANTON DE LA RIOJA 05	



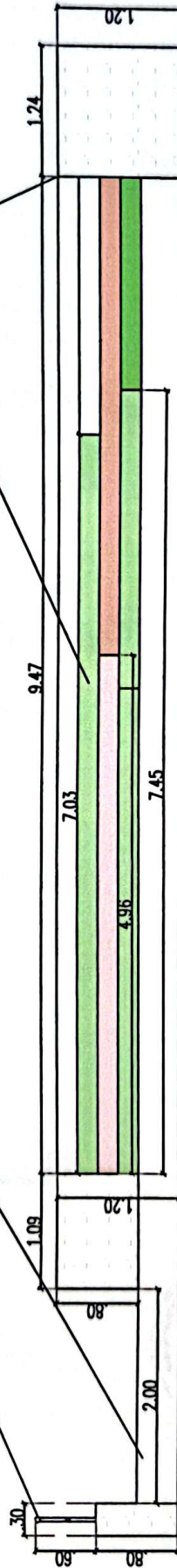
# MIRADOR

Barandas de caños metálicos  
- A definir

RAMPA - ACCESO

Gradas - Term. Pintura p/  
Exterior color verde y naranja

Muros - Terminación piedra  
colocadas

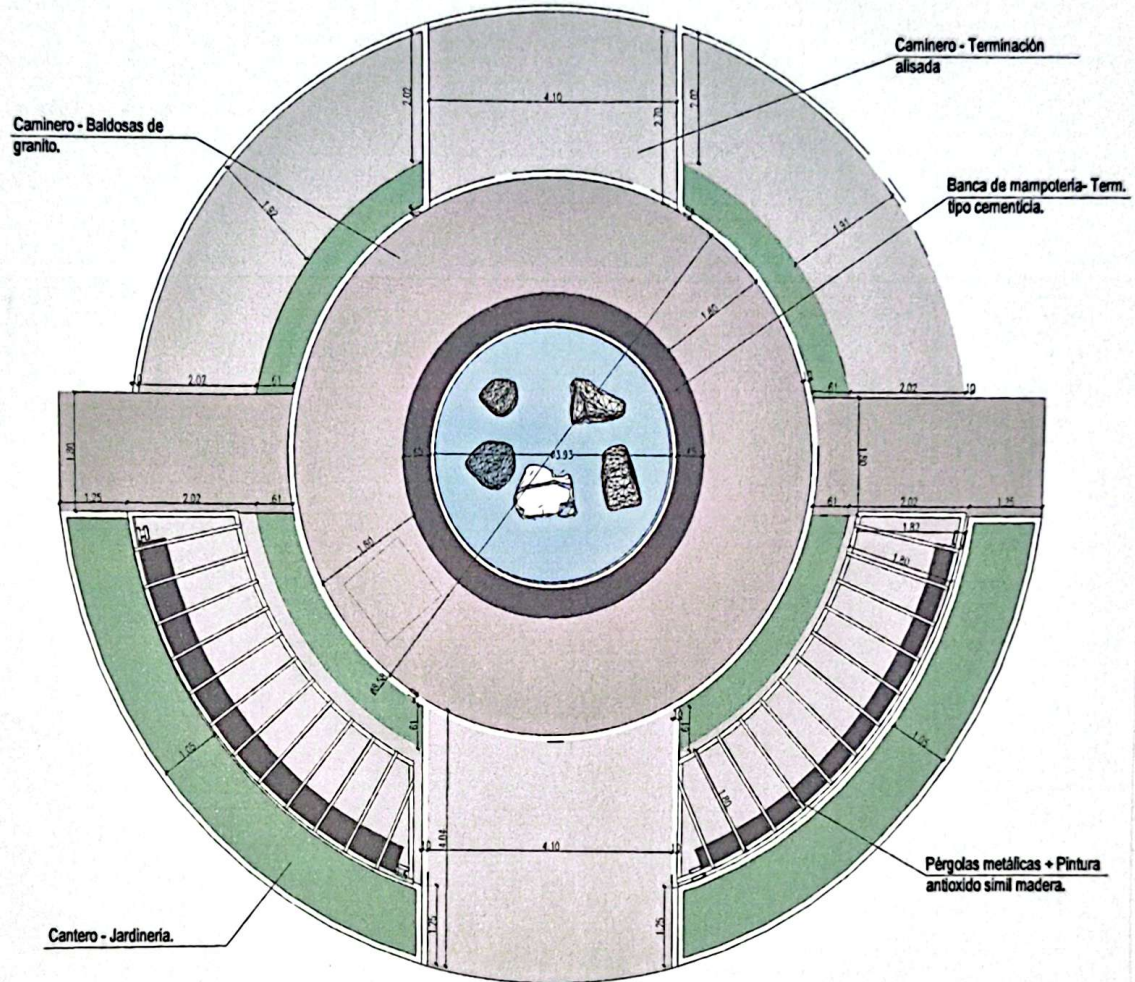


CORTE A-A ACOTADO  
Escala 1/50

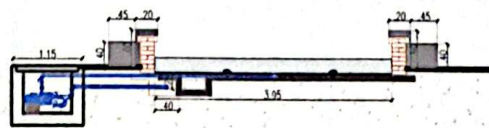


PROYECTO PARQUE LIMITROFE CAPITÁN BADO	
CAPITÁN BADO - PARAGUAY	
MIRADOR	
Firma del técnico Arq. Johana Martínez	NÚMERO DE LÁMINA 04

# FUENTE



PLANTA ACOTADA  
Escala 1/50



CORTE A-A ACOTADO  
Escala 1/50



PROYECTO PARQUE LÍMITROFE CAPITÁN BADO	
CAPITÁN BADO - PARAGUAY	
ÁREA FUENTE	
Firma del Técnico Ing. Jhonny Martínez	05